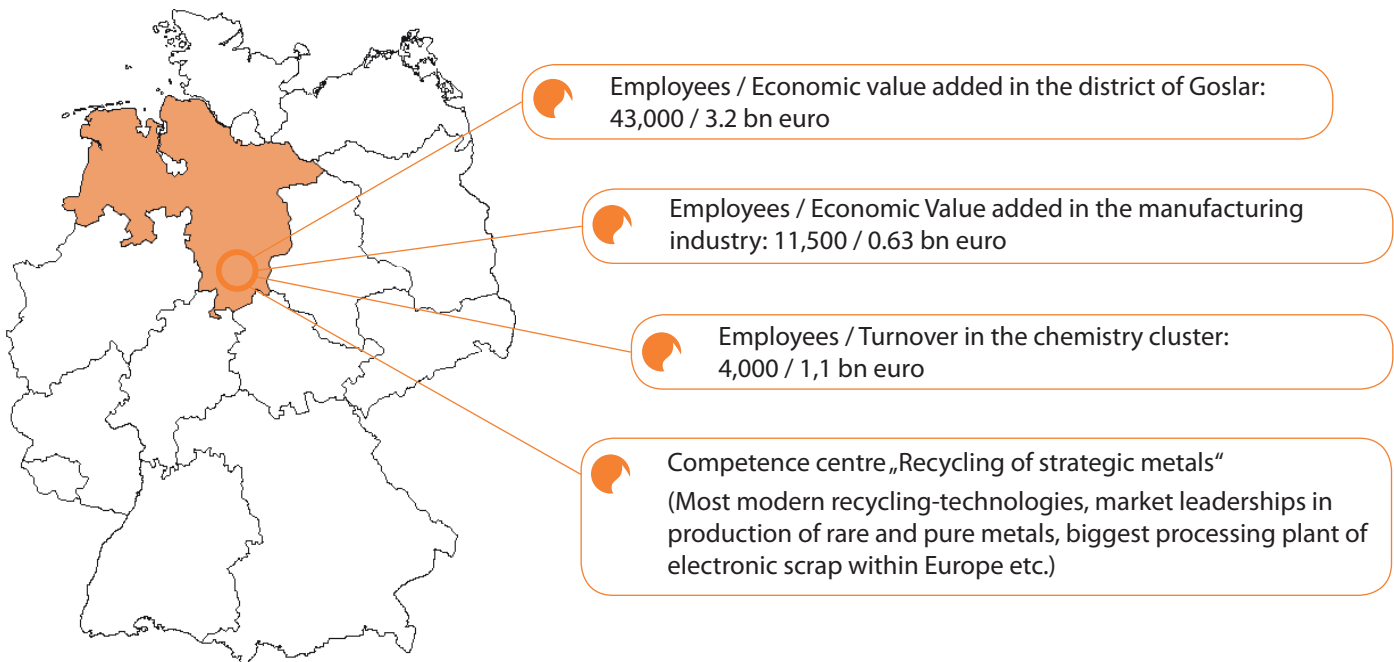


Economic Region of Goslar: an Industrial Location with Tradition



The district of Goslar is centrally located between Hannover, Braunschweig and Göttingen. The region lives from the wealth of nature in the Harz Mountains and the wealth of ideas of the many people living here. Short distances, economical prices and a diverse landscape of companies form the basis of an ideal investment location. The unmistakable Harz landscape provides the background for numerous high-tech enterprises and scientific facilities.

The region of Goslar is not only marked by tourism and health economy. Ores in the ground have made branches grow from very early on. In addition to the former focus on metal production and processing, today we have got the following branches: engineering, automotive, paper processing, chemistry, energy and resource management. The latter has developed in the region of Goslar into a recognized competence centre for most modern recycling strategies and technologies.

Industry & Services in the Fields of Chemistry, Energy and Resource Economy/ Recycling

Chemistry cluster in the region of Goslar: product diversity in a confined area

Chemical industry in the district of Goslar employs more than 4,250 persons and essentially contributes with a turnover of approx. 1.1 bn euro/year to the economic value added in the region of Goslar. Thus chemical industry is a major mainstay of the regional economy. 15 companies from the region in total, primarily located in the towns of Langelsheim and Goslar, can be directly allocated to this branch. Most of them belong to the segment of „chemical base substances“, others to the fields of „paints and dyes“ as well as „pharmaceutical products“. Another essential constituent of the chemistry cluster of the region is the Clausthal University of Technology with its diverse chemical institutes. At present the faculty of chemistry has got approx. 250 students enrolled.

Energy and environment: current growth industries in the region of Goslar

Energy and environment increasingly play a key role in growth and employment. The vision of „100%-nature-friendly Harz Mountains“, a region completely autarchic in terms of energy, motivates the regional protagonists. The Clausthal University of Technology, the Energy Research Centre Goslar and the Clausthaler Umwelttechnik-Institut GmbH contribute to a great extent to the transformation of fundamental research into practice-oriented and economically viable technologies as well as the foundation of companies. A number of young technology-oriented companies with energy- and/or environmental-specific relationships have already found in this „innovative milieu“ their site in the region of Goslar. And: very recently, the region has been working under high pressure to install for the first time ever world-wide a subterranean pump storage hydro power station in the Harz Mountains. The goal is to make this pilot plant an internationally recognized technology.



**Resources economy:
the region of Goslar as
competence centre for the
recycling of economic
strategic metals**

In October 2011 the Recycling-Cluster REWIMET was founded. It is a network of entrepreneurs, scientific institutions and other facilities which aims to develop the most modern recycling strategies and technologies for strategic metals such as germanium, gallium, indium, rhenium and others. The background is that the bigger shares of these metals are not to be found in the ground, but in circulation, which means in electric appliances such as computers, mobile phones etc.. The single-origin recycling of these elements requires technologically more sophisticated recycling processes. This is the crucial challenge REWIMET is facing. Accompanied by first-class research at the Clausthal University of Technology the region of Goslar has been developing a „competence centre of resource economy“ which will play a major role in the future in world-wide economic growth due to the shortage of natural resources getting increasingly expensive.

Industry & Services: Summary of Competitive and Locational Advantages

**Qualified workforce for the
industry in the region**

Goslar is located in the centre of the research triangle Hannover-Braunschweig-Göttingen, the distances to high-performance universities and thus to excellently skilled personnel are short. All universities in a distance of a one hour drive offer with approximately 90,000 students in total a high potential of skilled employees for the entire region. The more than 30 vocational training and further education facilities provide a wide range which is used by entrepreneurs as much as by employees in the surrounding area. Benefit from the wide-ranged and qualified offer of specialized personnel in the region of Goslar.

**Market potential for
investors**

The industrial structure in the region of Goslar is diversified to a great extent. Beside chemistry, resource economy and energy/ environment other branches such as for example mechanical engineering, logistics and automotive offer attractive investment opportunities. The spatial proximity of the region to the highways A 7 and A 2, to major enterprises operating on an international level (Volkswagen AG, Salzgitter AG) as well as 9.2 m inhabitants in a commuter belt of two hours are some arguments speaking for themselves. In addition, there are opportunities to get involved in vivid company and research networks of the region – an important source to secure innovation power and competitiveness in the long run.

**Attractive locations in the
Western Harz Mountains**

The region of Goslar is located centrally between the large urban centres of northern Germany (Ruhr Area, Hamburg, Berlin). The attractiveness, however, also results from the diverse and comparably economical palette of offers of both land and structures existing in the region. Whether you are looking for a site near a highway, in the direct surroundings of research facilities or centrally in one of the beautiful towns in our region: we will find an appropriate offer meeting all your needs.

**Advantageous frame
conditions for
entrepreneurial commitment**

To you as an investor interested in the development of an entrepreneurial site in the region of Goslar we provide all services from one institution. WiReGo (the economic promotion agency of the region of Goslar) assists you in seeking a site as well as in securing overall financing through various financial partners ranging from loans, venture capital to existing subsidy programmes. Furthermore we put you in touch with important contacts in the region, whether industrial, administrative or scientific. Through our support you will from the beginning be provided with optimal conditions for your economic success in the region of Goslar. Find more information about the assistance programmes of WiReGo at: www.wirego.de